

# ACCUSINE® POWER CORRECTION SYSTEM IN MODEL 6 MOTOR CONTROL CENTERS

*Active harmonic filtering in MCCs improves electrical network reliability to reduce operating costs and equipment downtime*

## ACCUSINE PCS stabilizes electrical systems

- Dynamic current injection for harmonic cancellation and power factor correction
- Reduces harmonics for IEEE 519 (1992) standard compliance
- Decreases harmonic-related overheating of cables, switchgear and transformers
- Reduces downtime caused by nuisance thermal tripping of protective devices
- Increases electrical network reliability and reduces operating costs
- Compensates each phase independently
- UL and cUL approved, temperature and short circuit tested
- Parallel connection allows for easy retrofit and installation of multiple units for large networks
- Filters to the 50th harmonic
- Filters entire network or specific loads, depending on installation point
- Response to load fluctuations begins in 40 microseconds with 8 milliseconds for full response to step load changes
- IGBT-based power electronic technology



The SQUARE D ACCUSINE Power Correction System (PCS) reduces the problematic harmonic levels that can lead to costly downtime and maintenance. In addition, the pre-packaged MCC factory solution for the PCS saves on installation time and costs.

Now available for Model 6 Motor Control Centers, the ACCUSINE PCS efficiently eliminates the opportunities for poor power quality at the source. This is an essential function as Motor Control Centers (MCCs) and electrical power systems continually incorporate more and more solid state components, such as VFDs, soft starts, and PLCs, increasing the potential for power quality issues.

Key features include:

- Active Harmonic Filtration
- Resonance Prevention
- Power Factor Correction
- Dynamic VAR Compensation
- Expandable through MCC horizontal bus construction



Schneider Electric Brands



# ACCUSINE® Power Correction System for Model 6 Motor Control Centers

## ACCUSINE PCS Sizing and Application

A harmonic study is not required to select the size of the ACCUSINE PCS installation, because when ACCUSINE PCS is installed it becomes a lower impedance path for harmonics than the existing power supply. Unlike passive devices, ACCUSINE PCS is easy to apply and cannot be overloaded.

For pricing and proper sizing, please contact your nearest Square D/Schneider Electric field sales representative. To expedite the product selection process, please have a single line diagram and/or details of the application including sizes of transformers, non-linear and linear loads, and any existing filters and capacitors.



ACCUSINE PCS MCC unit

## Model 6 Motor Control Centers (MCC) from Square D

The Model 6 MCC provides a platform to mount multiple motor controllers of all types (from full-voltage non-reversing starters to variable frequency drives) and sizes in a centralized, compact, and robust structure. The modular design of the MCC makes it easy to install, maintain, and upgrade your system. An ACCUSINE PCS can be added to existing Model 5 and 6 Motor Control Centers by splicing an ACCUSINE MCC section using standard splice kits.

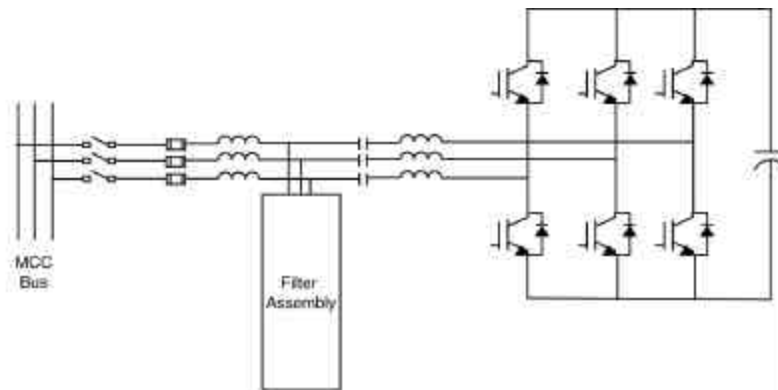
## ACCUSINE PCS Product Selection

208-480 V Three Phase, 50/60 Hz Models

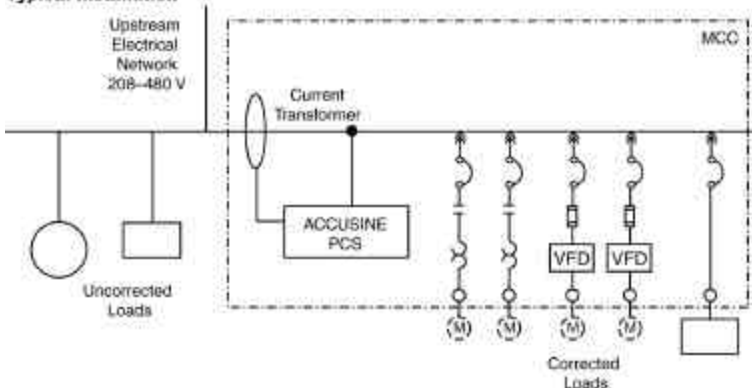
Total Current $A_{ms}$	Disconnect Switch Amps	Class 8998 Catalog Number	Maximum Reactive Power (kVar)		MCC Dimensions (HxWxD inches)	Wt. (lbs.)
			@ 208 V	@ 480 V		
50	100	M6AF050A	18.0	41.6	90x20x20	500
100	150	M6AF100A	36.0	83.1	90x20x20	600

- Up to five multiple units can be connected in parallel to increase compensation. Specifications are subject to change without notice.
- Two remote 400Hz current transformers are required for three phase loads. Three remote 400Hz CTs are required when single phase loads are present. The CTs are supplied in each filter compartment for customer installation to the MCC incoming power cables.
- All units include door-interlocked disconnect with a rotary handle and 600 V, 200 kAIC Class T fuses

## MCC Unit Internal Circuit Diagram



## Typical Installation



For more information on the ACCUSINE PCS or Model 6 MCC, contact Square D at 1-888-778-2733. Or, visit the Square D Website at [www.SquareD.com](http://www.SquareD.com).